



CARDI

Data / Date 31/07/2020

Cod. TARATURA DPH3000-17.dft

Descrizione
Description

DPH3000 ME-17

Schema montaggio e taratura frizione
Clutch assembly and calibration diagram

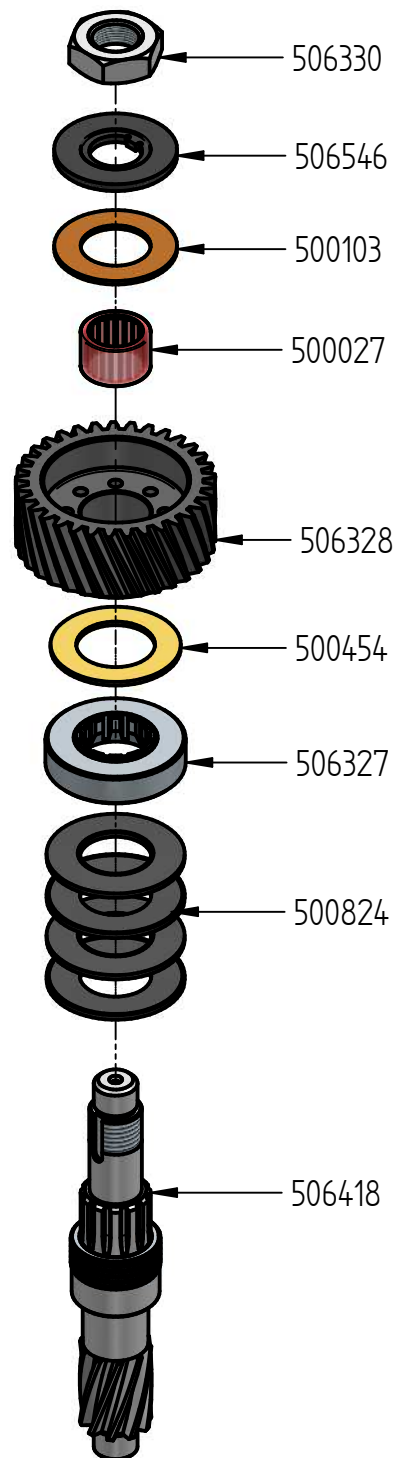
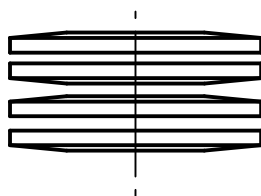
Procedura:

1. Ingrassare le parti che compongono il sistema frizione e montarle secondo la sequenza indicata nel disegno A, ponendo attenzione al corretto orientamento delle molle a tazza 500824
2. Bloccare l'albero come indicato in figura B, quindi stringere il dado 506330 finché l'ingranaggio 506328 slitti alla coppia indicata
3. Ruotare di 20-25 giri completi l'ingranaggio 506328, quindi misurare la coppia, riportandola, se necessario, al valore indicato in figura B

Procedure:

1. Grease the parts that make up the clutch system and assemble them according to the sequence indicated in drawing A, paying attention to the correct orientation of the bevel springs 500824
2. Lock the spindle as shown in figure B, then tighten the nut 506330 until the gear 506328 slips to the indicated torque
3. Turn the gear 506328 20-25 full turns, then measure the torque, and calibrate it, if necessary, to the value indicated in drawing B

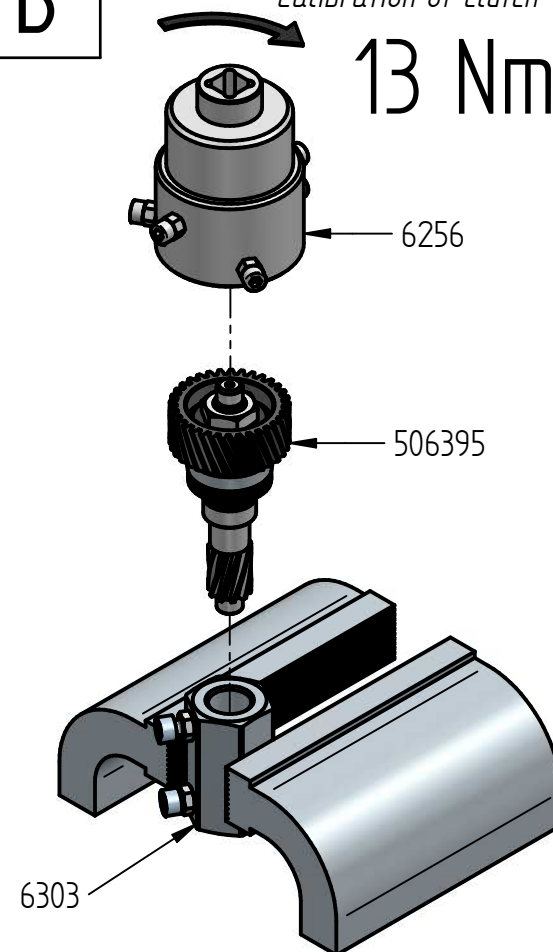
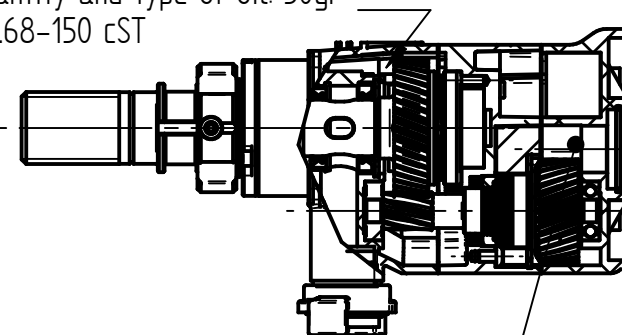
A



B

Coppia di taratura frizione
Calibration of clutch torque

13 Nm

Quantity and type of oil: 50gr
E.P.68-150 cSTQuantity and type of grease: 15gr
MOBYDENUM DISULPHIDE GREASE